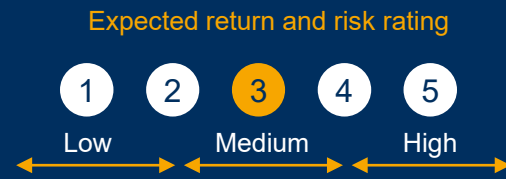


## Factsheet: Balanced Income

30 September 2022



The LCP model wealth portfolios are a blueprint design of a range of portfolios which we believe meet the needs of institutional wealth investors. This document displays key facts and information about the Balanced Income portfolio based on data as at 30 September 2022.

### Objective

The key objectives of this portfolio are as follows:

- To achieve a positive net real return.
- To allow an investor to take income from their assets

### Typical clients

A typical investor in this portfolio will have a medium risk tolerance for their investments.

The income portfolios are intended for investors who are taking income from their investments.

### Key facts

Expected return (median, net of underlying manager fee)	6.6% pa
Standard deviation	8.7% pa
Income target	5.0% pa
% actively managed	73%
Total underlying manager fees	0.40% pa
Number of asset classes	11

### Background

The LCP Private Wealth team has designed a range of model wealth portfolios using our years of experience in portfolio design and based on our knowledge of the range of investments available in this space.

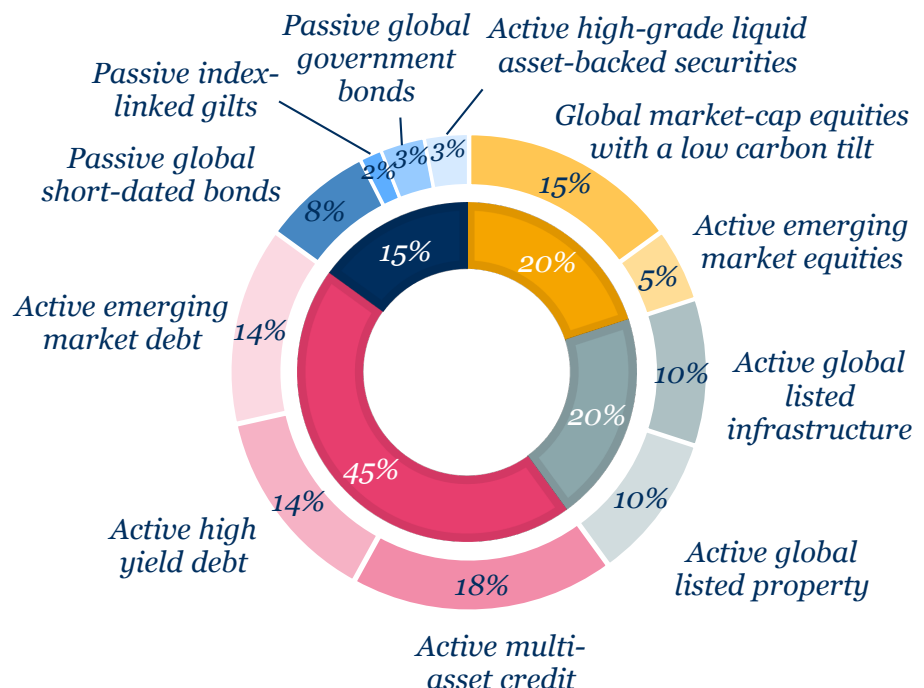
Each model wealth portfolio is built using four distinct building blocks:

- Equities
- Real assets
- Growth credit (including high yield debt)
- Low risk bonds and gilts

These building blocks are combined in varying proportions to produce a range of model wealth portfolios.

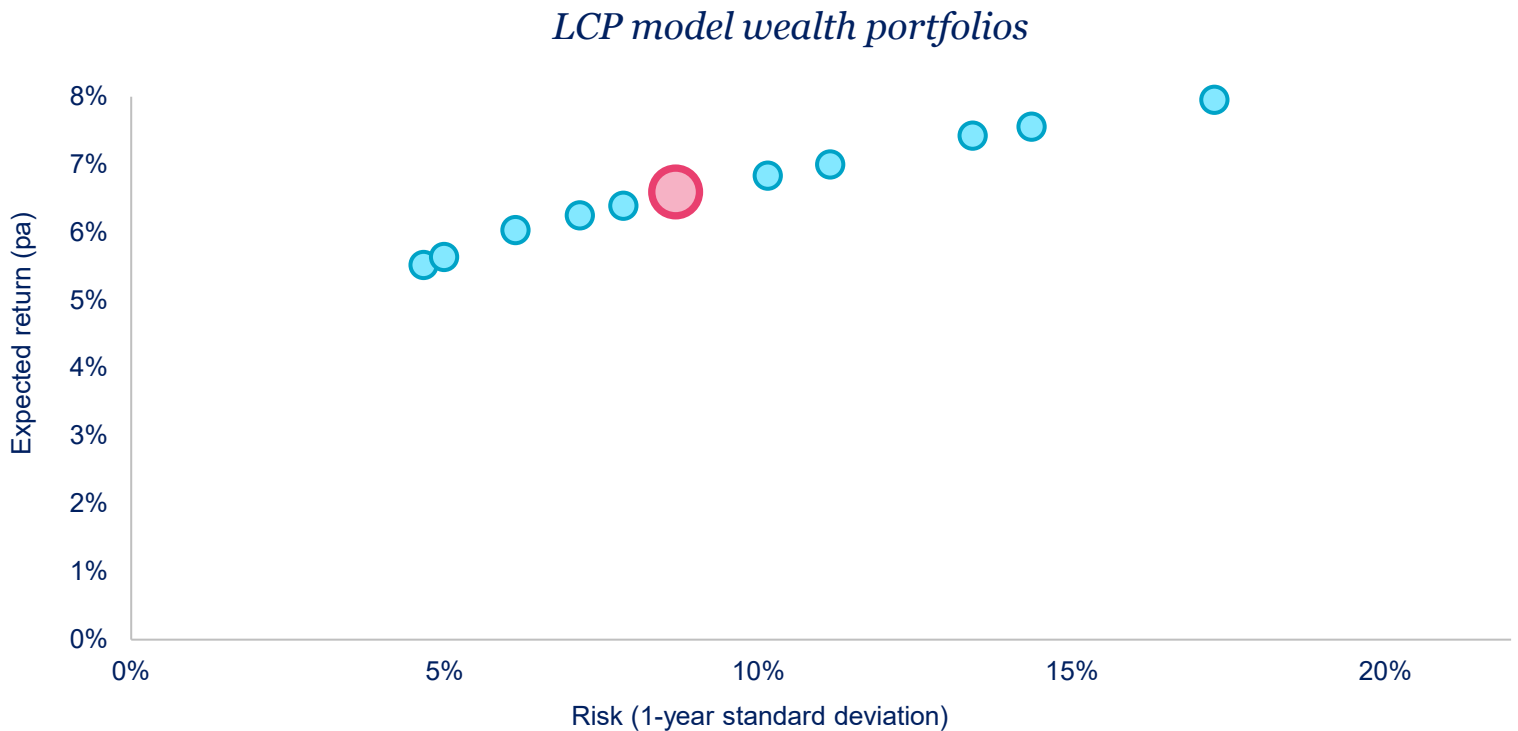
### Asset class weightings

The long-term strategic allocation for the Balanced Income model wealth portfolio is shown below (note that the actual allocations will vary over time due to market movements and changes made by LCP).



### Risk/return characteristics

The chart below shows the expected risk and expected return values of our range of model wealth portfolios with the Balanced Income portfolio highlighted in pink. The chart assumes expected risk and return values for the underlying asset classes.



### Research and review

Please click [here](#) to view more information on our research and review process.

### Responsible investment

ESG risk factors are integrated at all stages of our portfolio construction process.

### Notice


All rights to this document are reserved to Lane Clark & Peacock LLP ('LCP'). This document may not be reproduced in whole or in part. We accept no liability to anyone to whom this document has been provided (with or without our consent).

Information in this document does not constitute legal, investment, financial or any other form of professional advice, nor a recommendation of a particular course of action and is not intended to illustrate anything that falls under FCA jurisdiction.

We are not authorised to provide individuals with regulated financial advice. If you require this we recommend that you speak with a financial adviser whose advice falls under the jurisdiction of the Financial Services & Markets Act 2000 before making any financial or investment decisions. You can find a financial advisor near you by visiting the [Money and Pensions Service](#).

Please see our [Legal Notices](#) for further information.

 Insights and opinions on our viewpoint  
[www.lcp.uk.com/our-viewpoint](http://www.lcp.uk.com/our-viewpoint)

 Connect with us for updates  
[@LCP actuaries](https://twitter.com/LCP_actuaries)

 [LinkedIn](#)

Lane Clark & Peacock LLP is a limited liability partnership registered in England and Wales with registered number OC301436. LCP is a registered trademark in the UK (Regd. TM No 2315442) and in the EU (Regd. TM No 002935583). All partners are members of Lane Clark & Peacock LLP. A list of members' names is available for inspection at 95 Wigmore Street, London, W1U 1DQ, the firm's principal place of business and registered office.

LCP is authorised and regulated by the Financial Conduct Authority and licensed by the Institute and Faculty of Actuaries in respect of a range of investment business activities. Locations in London, Winchester and Ireland. © Lane Clark & Peacock LLP 2022

<https://www.lcp.uk.com/emails-important-information/> contains important information about this communication from LCP, including limitations as to its use.